



MONTHLY MEMBERSHIP PROGRESS REPORT

District 11 B1

Results as of: 04/30/2018

GMT: STEVE ANTON

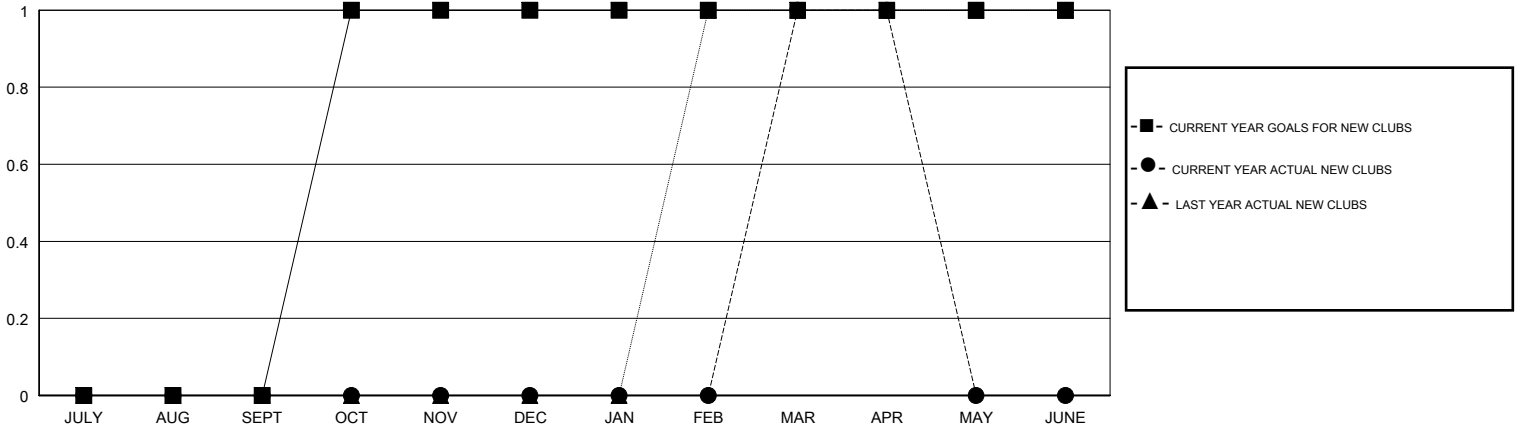
LOCATION MICHIGAN

GMT CA

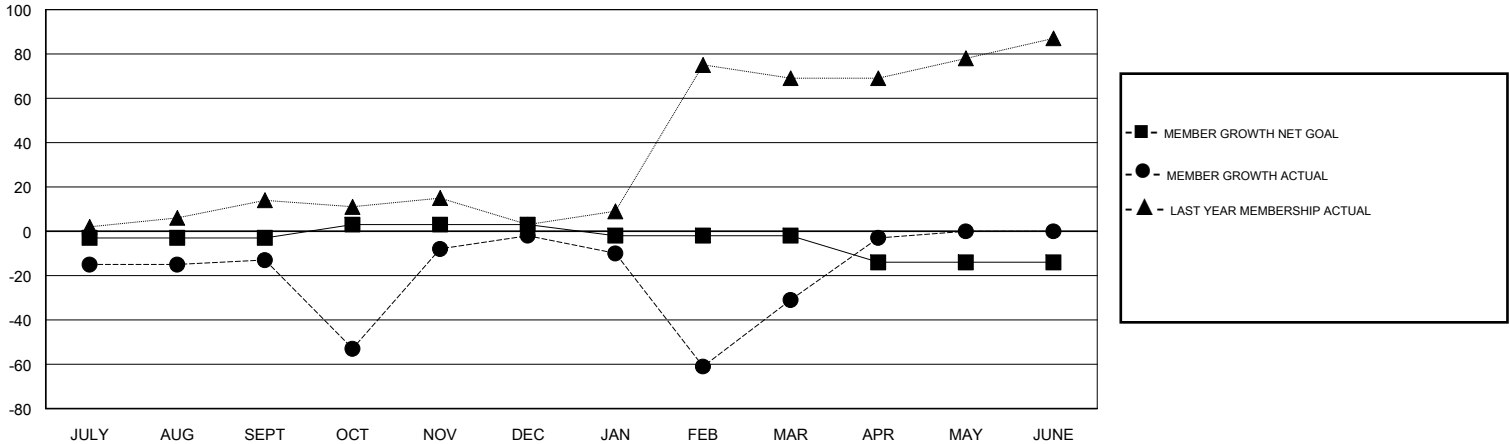
Clubs			
RESULTS FOR 2017-2018			
QUARTER	NEW CLUB GOAL	NEW CLUBS	DROPPED CLUBS
JULY/AUG/SEPT	0	0	0
OCT/NOV/DEC	1	0	0
JAN/FEB/MAR	0	1	0
APR/MAY/JUNE	0	0	0

Members			
RESULTS FOR 2017-2018			
QUARTER	MEMBER GROWTH NET GOAL	MEMBER GROWTH ACTUAL	DROPPED MEMBERS ACTUAL (including transfers)
JULY/AUG/SEPT	-3	10	21
OCT/NOV/DEC	6	73	61
JAN/FEB/MAR	-5	46	73
APR/MAY/JUNE	-12	35	5

GOALS AND ACTUAL NEW CLUBS CUMULATIVE



GOALS AND ACTUAL MEMBERS CUMULATIVE



DROPPED CLUBS: 0

23 CLUBS OF 40 ADDED 1 OR MORE NEW MEMBERS

GENDER DISTRIBUTION	
MALE	704 (66.67%)
FEMALE	352 (33.33%)
Women Percentage Fiscal Year Goal: 20%	

DROPPED MEMBERS	
DECEASED	14
CLUB CANCELLED	0
OTHER	146
TOTAL	160

[CLICK HERE FOR CUMULATIVE MEMBERSHIP DATA](#)

TOTAL FAMILY UNIT MEMBERS	199
FAMILY MEMBERS PAYING HALF DUES	102